

Clinic Information

(540) 342-9531

Please Return To:
Roanoke Valley Chapter of the
Brain Injury Association of Virginia
302 Second Street
Roanoke, Virginia 24011

We appreciate your involvement!



All proceeds benefit
Brain Injury Services of SWVA &
Roanoke Valley Chapter of the Brain Injury
Association of Virginia



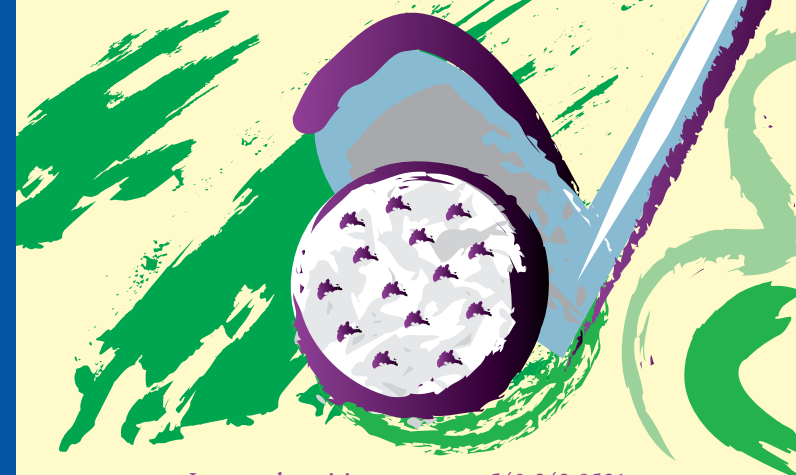
ADAPTIVE GOLF CLINIC

For therapists and PGA golf professionals
September 26 & 27, 2006



Presented By:
King Pharmaceuticals &
Virginia Premier Health Plan

Sponsored By:
BB&T, Carilion Health System,
Grand Home Furnishings,
Michie Hamlett Lowry Rasmussen & Tweel, PC
Virginia Prosthetics



Interested participants contact: 540-342-9531

WELCOME

Golf provides a fantastic recreational opportunity for all! Any person, of any age, of any ability level, can enjoy the game of golf. Join us for this two day adaptive golf clinic that focuses on a person's ability, not his/her disability.

Day one provides instruction and training to therapists such as RTs, PTs, OTs and PGA Golf Professionals.

Day two, therapists and PGA Golf Professionals practice their skills teaching adaptive golfing techniques to physically challenged individuals.

The goal is to provide instruction to bring golf into clinical settings for successful utilization in the rehabilitation process, and to assist PGA Golf Professionals in providing instruction to those who are physically challenged. On day two, this clinic is free of charge for persons with physical disabilities.

The clinic offers 12 CEUs for therapists and 8 MSR hours (4 per day) for PGA Golf Professionals as approved by the Jefferson College of Health Sciences and The PGA of America, respectively.

All proceeds benefit
Brain Injury Services of SWVA &
Roanoke Valley Chapter of the
Brain Injury Association of Virginia

WORKSHOP SCHEDULE

Tuesday, September 26, 2006

for therapists and PGA Golf Professionals only

- | | |
|-------------------|--|
| 8:30-9:00 a.m. | Registration and light breakfast/Introductions |
| 9:00-9:30 a.m. | How and when to use adaptive golf as a method of treatment |
| 9:30 - 10:30 a.m. | Instruction:
Grip
Stance/Balance
Swing
Safety |
| 10:30-10:45 a.m. | Break |
| 10:45-11:30 a.m. | Instruction continued |
| 11:30-12:00 p.m. | Product demo |
| 12:00-1:00 p.m. | Lunch (provided) |
| 1:00-3:00 p.m. | Practicum |
| 3:00-4:00 p.m. | Competency skills check |

Wednesday, September 27, 2006

for therapists, PGA Golf Professionals and physically challenged individuals

- | | |
|-------------------|---|
| 8:30-9:00 a.m. | Registration and light breakfast |
| 9:00-9:30 a.m. | Program introduction |
| 9:30 - 12:00 a.m. | Hands-on instruction on the driving range |
| 12:00-1:00 p.m. | Lunch (provided) |
| 1:00-4:00 p.m. | Hands-on instruction on driving range continued |

Directions: From Roanoke Civic Center go East on 460 about 3 miles (8 traffic lights). Turn left on Blue Hills Drive, then right on Blue Hills Circle. Look for sign on left "Welcome to Blue Hills."

If you need personal care assistance,
please bring an aid to assist you.

Registration Information

Registration deadline is
September 13, 2006

- ☐ Clinic Fee: \$70 (includes both days)
- ☐ Student Fee: \$35
- ☐ Applicable CEU fee for Therapist: \$5
- ☐ Wednesday Survivor Participant: (no fee)



JEFFERSON COLLEGE
of HEALTH SCIENCES



MIDDLE ATLANTIC
SECTION

Name: _____

Address: _____

City/State/Zip: _____

Daytime Phone: _____

Detach and return with check payable to:

Roanoke Valley Chapter of the
Brain Injury Association of Virginia
302 Second Street
Roanoke, Virginia 24011